



# CREANEY PRIMARY SCHOOL



**2025  
KINDERGARTEN**



# WELCOME TO CREANEY PRIMARY SCHOOL

## INTRODUCTION

The Kindergarten year is an exciting time for both parents and children. The Principal, staff and school community welcome you to Creaney Primary School.

This booklet outlines our early childhood philosophy, key operational processes and covers a number of practical issues to ensure your child's care and safety, which will enable a smooth and enjoyable transition to Kindergarten. Please read it in conjunction with the school's main information booklet, which will become available early in 2025.

## SCHOOL VISION

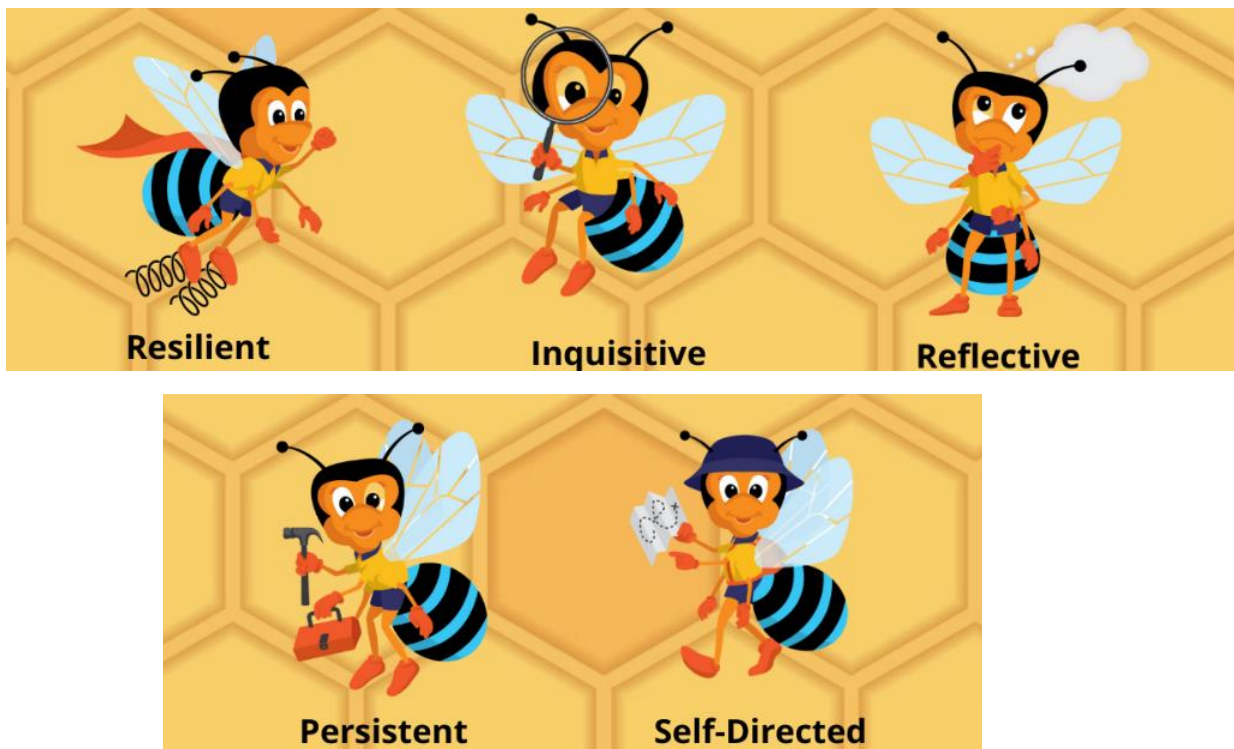
To be part of a community which develops a child who is motivated to reach their potential academically, socially and responsibly, in a caring and supportive environment.

Our motto is 'Caring' and our commitment is as follows:

- We care about our community
- We care about our environment
- We care about our learning

At Creaney Primary School we pride ourselves in making learning visible. Learning intentions and success criteria are displayed in 'learner friendly' language to help our learners know 'Where am I going?', 'How am I going?' and 'Where to next?'. Our goal, as teachers, is to develop learners that are:

- Resilient
- Persistent
- Self-directed
- Inquisitive
- Reflective



## EARLY CHILDHOOD EDUCATION PHILOSOPHY

***Our school vision is to be part of a community which develops a child who is motivated to reach their potential academically, socially and responsibly in a caring and supportive environment.***

Creaney Primary School strives to develop unique and confident learners with a strong sense of identity. Our dedicated early childhood educators deliver authentic learning experiences which support the development of the **whole child**. We are committed to providing a quality holistic education that values each child's abilities, celebrates cultural diversity and provides a pathway to a successful future.

The Early Years Learning Framework (EYLF) and the National Quality Standards (NQS) are at the centre of our learnings programs, and our curriculum decision making is informed by the Western Australian Curriculum.

### TEACHING AND LEARNING

At Creaney PS, high quality teaching and learning is our core business. Our Kindergarten to Year 2 programs cater for individual abilities and interests and engage students in both intentional play-based learning and explicit instruction to ensure foundational literacy and numeracy skills are developed.

We believe...

- In delivering quality teaching through collaboration, moderation, ongoing professional learning and self-reflection of practice and pedagogy
- In delivering developmentally appropriate programs that are inclusive of all children
- That children should view themselves as life-long learners
- In nurturing the development of oral language as the foundational skill to all learning
- In understanding children's capabilities and using these as a starting point for new learning
- In using evidence-based programs including Creaney Phonics Program, Talk for Writing, and MiniLit (intervention program.)

### THE LEARNING ENVIRONMENT

At Creaney PS, our learning environments are welcoming and supportive spaces that provide children with the essential building blocks for learning, supported by meaningful interactions with educators.

We believe...

- In the importance of supporting students to become active participants in their own learning and develop a sense of agency by providing opportunities for choice
- play is essential for early learning and thus we plan experiences that are balanced, evidence-based, intentional, guided and child-centered
- In providing indoor and outdoor learning environments that encourage active learning through risk taking, creative exploration and investigation; including our nature play area, school vegetable gardens, Creaney chicken coop, playgrounds and Loose parts program
- In developing children's awareness of caring for the environment and sustainability practices.

### RELATIONSHIPS AND PARTNERSHIPS

At Creaney PS, we nurture each child to develop a positive sense of self and well-being and build strong, positive and responsive relationships with each child, their family and other significant adults including educators from other services.

We believe...

- Families are children's first and most influential teachers
- Learning outcomes are more likely to be achieved if we work in partnership with families
- In forming strong partnerships with educators and professionals from other services and support agencies

## OUR PROGRAM

At Creaney Primary School, we take pride in our excellent early childhood facilities, our openness to innovative ideas, our quality opportunities and care for students. You can be assured that our students' best interests are our prime motivation. Our early childhood teachers and Education Assistants are well-qualified, experienced and dedicated, working together as a team to create a warm learning environment. They work hard to provide a high-quality education for every child and are constantly exploring new ways to help children learn. They also value your role as parent-educator and encourage you to be involved in the work of the school by helping in the classroom and at home with your child.

Our program focuses on the development of the whole child, across all domains. It provides learning experiences that develop physical, social, emotional and cognitive skills. Daily transitions and routines are carefully planned to encourage independence across these domains. Current initiatives in early childhood education such as the National Quality Standards for Early Childhood Education and Care, the Early Years Learning Framework and the Kindy Guidelines inform the educational programs and practices at Creaney Primary School.

## PARENT INVOLVEMENT

Research shows that parent and community involvement in schools greatly improves student achievement. To reach their potential, students need parents and the community to take an active role in their education. Your encouragement and support will add to your child's Kindergarten year and set a foundation for future positive school experiences. Our parent roster is an ideal way for you to become involved. This offers an opportunity for you to come into school for a short time and assist with the learning program. Your participation in our parent roster will:

- Enhance our learning program
- Model to your child the importance of education
- Strengthen the bond between school and home
- Inform you of your child's development
- Be greatly enjoyed by your child

The school has an active School Board as well as a vibrant P&C. Both assist the school in various ways including policy and planning, fundraising and organisation of special events. New members are most welcome.

## HOW TO HELP YOUR CHILD PREPARE FOR KINDERGARTEN

Here are some easy ways you can help your child. It takes time but it's worth it.

- Provide some experiences where your child is accustomed to spending a little time away from you, knowing that you will return
- Encourage your child to independently use a toilet and wash and dry their hands
- Encourage your child to be able to open and close their lunchbox and school bag
- Encourage your child to be able to put on their shoes and socks
- Encourage your child to wipe their own nose
- Encourage your child to pack and carry his or her own bag
- Please arrive at school early on the first day to ease settling-in
- When the siren goes for the start of school, promptly say goodbye to your child so they may begin their school day. Remember, in some cases, staying longer than necessary may create separation issues later

## SCHOOL ATTENDANCE

The Kindergarten year is considered pre-compulsory schooling, however, once enrolled, your child is expected to attend. Your child's teacher plans programs and activities that build on previously learned skills. Developing the habit of going to school regularly from Kindergarten is vital so your child does not miss out on important ideas and skills they need for future learning. You can help by:

- Talking positively about school so your child is happy to go each day
- Showing interest in what your child is doing at school and talking with the teacher about what you can do at home
- Setting play dates to help your child make friends
- Teaching your child how to share and take turns
- Arriving at school and collecting your child from school on time
- Making sure your child gets nutritious meals each day and enough sleep each night
- Making appointments with doctors, dentists and specialists after school, during the school holidays or on non-Kindy days
- Taking family holidays during the school holidays and not during term time

## SMS MESSAGING

The SMS communication system will send an SMS to all parents whose child is absent without an explanation after 10:00am each day. The automated message would be similar to 'CreaneyPS records show John Citizen is absent Thursday, 02/02/25. Please reply SMS student name/reason/absence date'.

## STUDENT VACATIONS

Parents wishing to take their children out of school for a family holiday of 2 days or more, must complete an **In-term Holiday Form**, which can be accessed through our website, or hard copies can be collected from the school office. Parents are requested not to use Seesaw or the SMS MessageU system to report absences of this nature.

## TERM DATES 2025

Term 1	Wednesday 5 February	Friday 11 April
School Holidays	Saturday 12 April	Sunday 27 April
Term 2	Monday 28 April	Friday 4 July
School Holidays	Saturday 5 July	Sunday 20 July
Term 3	Tuesday 22 July	Friday 26 September
School Holidays	Saturday 27 September	Sunday 12 October
Term 4	Tuesday 14 October	Thursday 18 December
School Holidays	Friday 19 December	Monday 2 February

## SCHOOL DEVELOPMENT DAYS

Term 1	Monday 3 February/Tuesday 4 February
Term 2	Friday 30 May
Term 3	Monday 21 July
Term 4	Monday 13 October/Friday 19 December

## PUBLIC HOLIDAYS WITHIN THE TERM

Term 1	Monday 3 March (Labour Day)
Term 2	Monday 2 June (W.A Day)
Term 3	-
Term 4	-

## HOURS OF INSTRUCTION

8:40am – 10:40am	School Commences
10:40am – 11:00am	Recess
11:00am – 1:00pm	Mid-Morning Session
1:00pm – 1:40pm	Lunch
1:40pm – 2:50pm	Afternoon Session

## KINDERGARTEN DAYS AND TIMES

Kindergarten times are the same times as the primary school. The siren sounds at 8:40am to signal the start of the day and 2:50pm at the end of the day. In line with school policy, students should not arrive at school until 8:30am. Our Kindergarten program begins outside each morning. We encourage students to come to Kindy no earlier than 8:30am.

Kindergarten attendance at school comprises of 5 days per fortnight as follows:

**Yellow Group** – Monday/Tuesday/alternate Wednesday

**Blue Group** – Thursday/Friday/alternate Wednesday

## ITEMS TO BRING TO SCHOOL EACH DAY

Every day your child will need a school back pack (large enough to hold big creations) containing the following items:

- A broad-brimmed navy blue Creaney Primary School hat - we are a Sunsmart School and follow a strict NO HAT, NO PLAY policy. Hats should be left in the bag ready for use every day
- One named reusable drink bottle (WATER ONLY)
- Fruit and/or vegetables cut into small portions and placed in a named reusable box for your child's healthy morning tea
- Lunch, usually a sandwich or wrap. Please note that we are an Allergy Aware school and have several students with extreme allergies to certain food types. This means no peanut butter and nut products. e.g: Nutella. Also, we would appreciate you not sending lollies, chocolates, fruit rollups or similar. These will be sent home if included in the lunch box
- A named change of clothes to be kept in their bag ALL YEAR ROUND. (Underwear, socks, tshirt, shorts, pants, jumper)
- Please also bring the navy blue Creaney Bag every day (supplied by the school on Orientation Day). This will double as a library bag and will be used daily to carry works of art and communications

All personal belongings (as listed above) should be clearly marked with your child's name; however, it is not necessary to name stationery items from the Personal Items Booklist as these are shared.

## SCHOOL UNIFORM

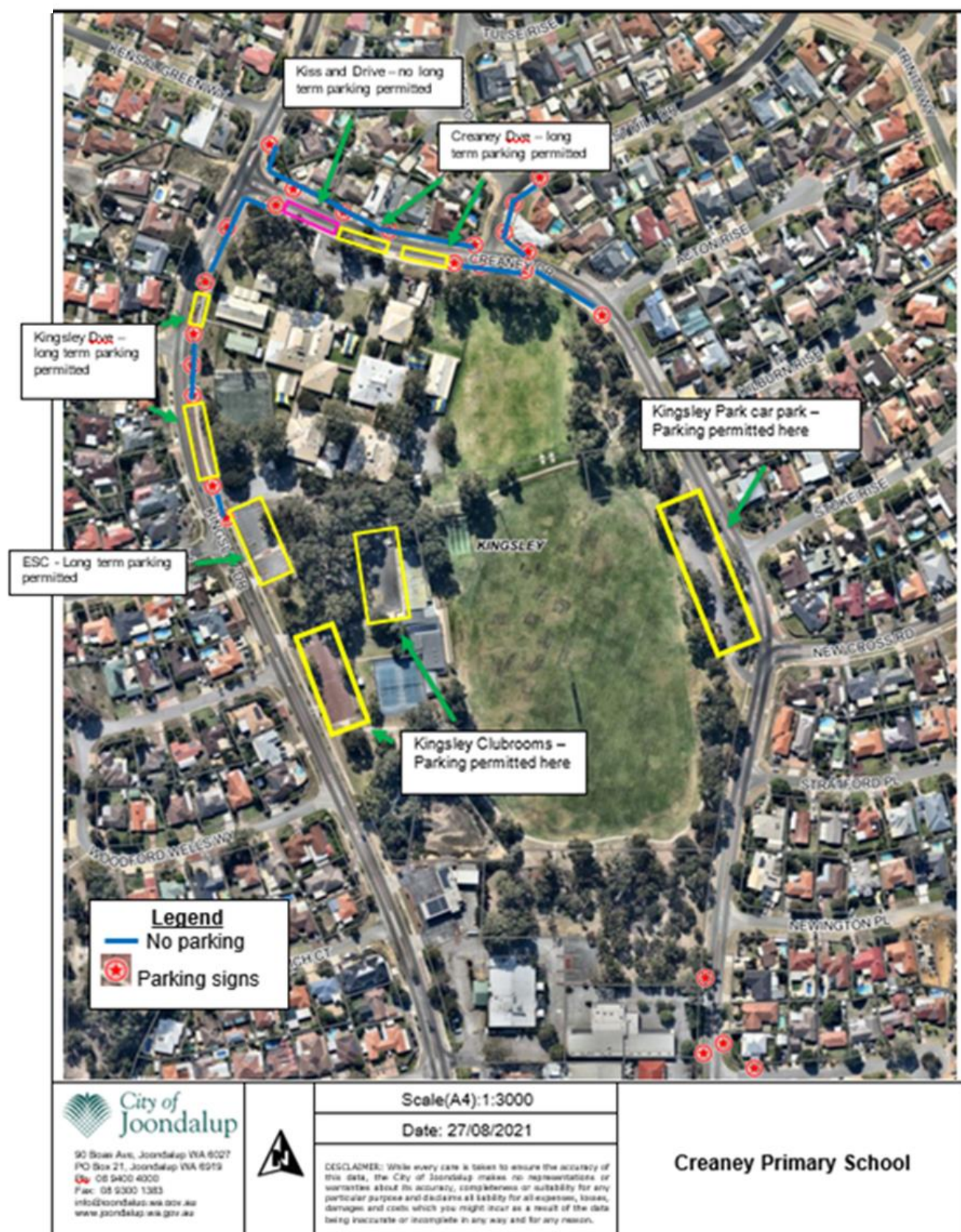
Students of Creaney Primary School wear the school uniform as approved by the School Board. Parents are asked to fully support the school by ensuring their child attends school in full school uniform at ALL times. The wearing of uniforms gives children a sense of belonging and assists in building a tradition of pupils being proud of themselves and of their school. The school has always received outstanding support from parents on the matter of uniform. Order forms and a price list are available from the school office as well as our website. It is particularly important that all students are dressed in school uniform for excursions as they are representing the school.

The full school uniform is available from:
Uniform Concepts: Shop 5/7 Delage St Joondalup WA 6027
Telephone: 9270 4660
Email: joondalup@uc.nellgray.com.au



## PARKING

Parking is around the perimeter of the school and at the Kingsley Football Club on Kingsley Drive. The staff car park is strictly for staff use only and is not to be used by parents for picking up or dropping off their children. Please also observe the 40km speed limit around the school. Care should always be taken when driving around the school to ensure the safety of our students.



## PICK UP AND DROP OFF

Please note that it is Department of Education policy that all Kindergarten children are to be personally delivered and picked up from Kindergarten by their parents or a guardian who has been authorised at the time of enrolment as an emergency contact. For this reason, Kindy parents should not utilise the Kiss and Drive. Parents are also requested to collect their children promptly at the end of the day as young children become distressed if left waiting for a parent to arrive. Please contact the school on 9408 2900 if you will be unavoidably delayed.

## SICK CHILDREN

Children who are unwell are best kept away from school. The Kindergarten does not have a sick room or a quiet corner. The room is always a hive of activity and constructive noise. Should your child become sick or have an injury, we will phone you to take him/her home. As such, please ensure you keep the school office updated with any changes to emergency contacts. It is also school policy that we contact you to inform of any bumps to the head your child may have had.

## SCHOOL CONTRIBUTIONS

In order to enrich the opportunities available to your child, there is a Voluntary Contribution listed on the Personal Items Booklist. You are encouraged to make this contribution to assist the school with providing equipment and resources.

Payments can be made in full through the following options:

- Personal Items List (option for payment available listed under the 'Voluntary Contributions' section of the list)
- Qkr app (labelled as 'Voluntary Contributions' in the Qkr app)

## P&C

There is also a P&C Levy contribution of \$20 per child per year to contribute to whole school initiatives, a \$10 ICT Contribution per child per year and a Chaplaincy Contribution of \$10 per child per year, payable to the P&C. These can be paid with the Personal Items Booklist or by cash in an envelope and placed in the P&C box located outside the school office, or by direct debit.

Creaney P&C Contributions

BSB: 306 – 105

Account: 43585

Reference: Child's Surname, First Name

Payment of these contributions would be greatly appreciated by the end of Term 1.

## MONEY COLLECTIONS/QKR APP

All voluntary contributions, school activities, excursions, incursions, camp and musical instrument hire are to be paid through the Qkr! App. This can be downloaded for free from the Apple App store for iPhones (iPads should download the iPhone App) or from Google Play for Android phones and tablets.

## SCHOOL CANTEEN

Our school operates a canteen three days a week – Monday, Thursday and Friday. Kindergarten children can access this for lunch times only. We have an online ordering system that is easy to use via the Spriggy Schools App. (Website: [www.spriggyschools.com.au](http://www.spriggyschools.com.au)). Please follow the link to set up your child's account. Lunches will be delivered to the classroom.



## PRE-PRIMARY ENROLMENTS FOR 2026

Creaney Primary School is a Local Area Intake school meaning enrolments are taken from a prescribed catchment area in the suburb of Kingsley. If our school has further capacity after making provision for local area intake needs, applications will be considered. While the Department of Education tries to ensure continuity in each child's schooling, enrolment at our school for children outside of our catchment into Pre-primary cannot be guaranteed.

### IN AREA

If you live in the school's local intake area, your child will be guaranteed a place in Pre-primary in 2026 and you will not need to re-enrol your child. You will, however, be asked to complete a Student Update Form, and to provide 2x current proofs of address, and your child's current Australian Immunisation History Statement with a status of 'up to date'.

### OUT OF AREA

If you do not live in the school's local intake area, you will be asked to complete an 'Application for Enrolment', and to provide 2 current proofs of address and your child's current Australian Immunisation History Statement with a status of 'up to date'. There is no guarantee that your child will be accepted into Pre-primary in 2026. Our capacity to accept out of area enrolments will depend on how many applications we receive from children living in the local intake area and how classes are structured for 2026. If we have the capacity to accept out of area enrolments, and we receive more applications than places available, the following criteria are applied to prioritise applications as per the Department of Education's Policy:

- First priority will be given to the child whose usual place of residence is in the intake area for the school and who has a sibling enrolled at the school for that year and who lived nearest the school
- Second priority will be given to the child whose usual place of residence is in the intake area for the school and who does not have a sibling enrolled at the school for that year and who lives nearest the school

Once enrolled in Pre-primary, all students (both in and out of catchment) are entitled to remain at Creaney Primary School until the end of their primary schooling. Out of catchment students are not guaranteed an enrolment at Woodvale Secondary College or Greenwood College.

### FORMAL REPORTING

A portfolio of your child's learning will be sent home at the end of Semester 1. A Kindergarten Report detailing your child's development will be available online through Connect at the end of Semester 2. Information will be sent out during Term 4 on how to access your child's report. There will also be a whole school Open Night during the year, where examples of children's learning across the year will be showcased and you will be invited to attend.

### CREANEY CHRONICLE AND FACEBOOK

The Creaney Chronicle is our electronic newsletter and a notification is sent out to families through Seesaw once the newsletter is available. Please take time to read it as it contains a wealth of information about school events and student achievement. Please subscribe to <http://creaneyps.wa.edu.au> and 'like' and 'follow' us on Facebook.

### ADMINISTRATION

Principal	Mr Ian Ralph
Deputy Principal	Mr Trent Jackson
Deputy Principal	Miss Jemma Flockhart
Manager Corporate Services	Ms Debra Rhodes
Administration and Enrolment Officer	Ms Lisa Leo
Administration Officer	Mrs Kerry Collings

We look forward to an exciting and rewarding year. If you have any concerns or queries, please do not hesitate to contact your child's teacher.